

AD

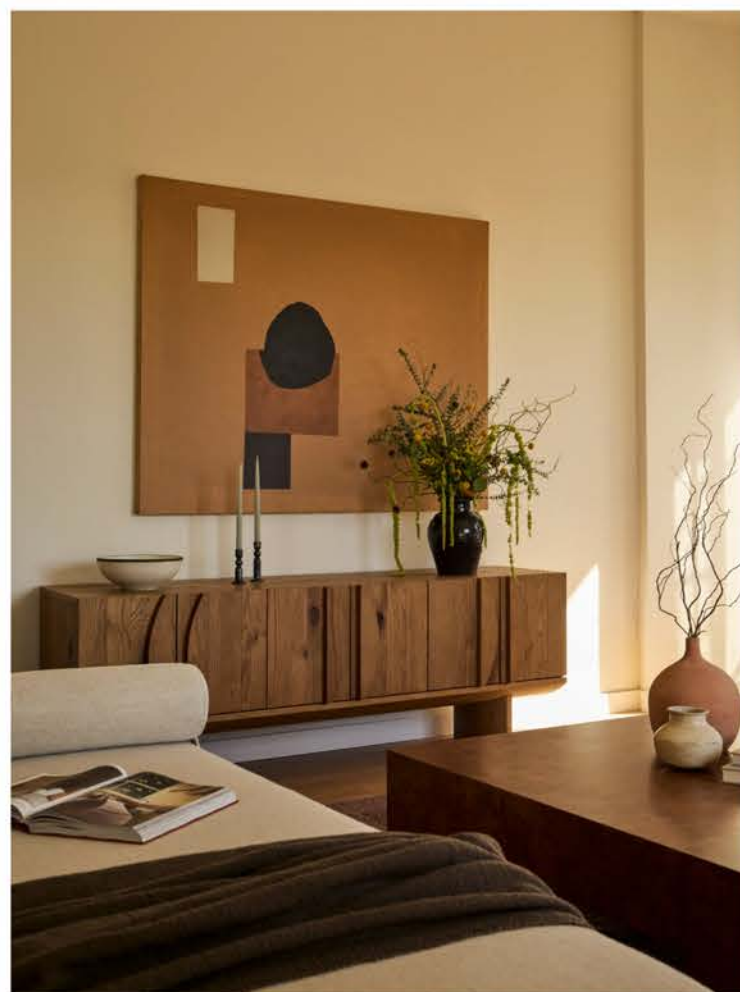
A Brooklyn penthouse between light and matter: the warm architecture of Frida Escobedo meets the interiors of Workstead.

Workstead Studio designs a penthouse in Brooklyn that “dialogues with the architecture and light of Mexican architect Frida Escobedo.”



A living room that plays on shapes and textures: a Serge Mouille-style pendant lamp, a linen daybed by Sundays Furniture, a geometric oak console table, and a sand-colored velvet sofa create a harmonious ensemble that becomes the heart of a young family. *Jonathon Hokklo*

A Brooklyn penthouse designed as a sensory retreat by Workstead in Frida Escobedo's new building .



A sand-colored velvet sofa and a geometric-design oak console table create a cozy and harmonious corner of the living room. *Jonathon Hokklo*

Located in Brooklyn, in the heart of Boerum Hill, Bergen Brooklyn is the first residential building completed in the United States by Frida Escobedo, a Mexican architect known for designing with light, shadow, and authentic materials. The residential project was developed by Avdoo with a multidisciplinary team: Workstead for the interiors, DXA Studio for the supporting architecture, and Patrick Cullina for the landscape. The result is an architecture that softens the boundaries of urban living through a rhythmic, layered facade and abundant green spaces that engage with the surrounding brownstones. "It was an incredibly collaborative process and a genuine pleasure to work with Avdoo, DXA, and Workstead on this project," says Escobedo, who is currently also working on the new pavilion at the Metropolitan Museum of Art in New York. "From design conception to the last detail, we felt a responsibility to respect the character of the neighborhood and the surrounding environment, while creating something new, designed to stand the test of time."

Dialogue with architecture



A rust-orange bouclé sofa, a sculptural oak coffee table, and a Kelly Wearstler armchair define the studio's welcoming atmosphere, enveloped by chocolate-brown walls. Works by Karen Covey and Brooke Noel interact with the furnishings, amplifying the space's character. Jonathon Hokklo

Inside, New York-based firm Workstead designed the Brooklyn penthouse as a haven of calm and light. As Ryan Mahoney, Principal at Workstead, explains, "Every project stems from a profound sensitivity to the context." In the new Bergen, the interiors amplify Escobedo's architectural vision and material palette. From the rhythmic tile patterns to the use of shadows, every detail is designed to engage with the building's architectural scale. The architect also emphasizes the role of the façade, "which invited us to work with light as a collaborator. Shadows and reflections animate the interiors, highlighting the sculptural profiles of the handles and countertops. We kept the palette neutral precisely to allow light and shadow to take center stage."

Kitchen and bathrooms



In the dining room, dark walnut combines with sculptural seating, linen suspension, accessories by Olive Atelier and a woven wooden console, in dialogue with the existing refined carpentry. Jonathon Hokklo

The heart of the penthouse is the kitchen, organized around white oak cabinetry, with handles carved directly from the wood, and complemented by a honed Taj Mahal quartzite countertop and cladding. Above the island, a pendant light designed by Workstead stands out, while to the side sits a custom-made wet bar, finished in light lacquer with bronze accents and a Kalahari stone countertop. This ensemble combines functionality and warmth, conceived as a natural extension of the living area. "Kitchens and bathrooms are the most tactile spaces in the home, and functionality always comes first, but it's softened by wood, artisanal details, and a warm yet restrained palette. Timelessness comes from proportion and rhythm," Mahoney continues.



In the master bathroom, the Workstead-designed sink is complemented by small accessories, bath linens, and a sculptural stool by Treehuase, creating an elegant and luminous ensemble. Jonathon Hokklo

The master bathroom is entirely clad in Crema Vanilla marble, with a custom white oak vanity, a freestanding tub, and heated floors that enhance the sense of comfort. The secondary bathrooms feature light-colored wall tiles and terrazzo floors, creating a balanced interplay of smooth, textured surfaces. As Workstead's principal observes, "We focused on meticulous solutions that foster calm and order: rhythmic wooden frames in the kitchen, continuous lines in the bathroom tiles. These details create harmony and restore balance."

Light as matter



In the bedroom, a camel velvet bench creates an intimate and relaxing refuge. Jonathon Hokklo

In every space, light is a key design consideration. "Our multidisciplinary practice integrates design at every scale, including lighting," observes Mahoney. "In this penthouse in Bergen, the custom-designed entryway sconce doesn't just illuminate the space; it helps define its identity and sets the tone from the moment you arrive."

Inside and out



Flooded with natural light, the space highlights the dark walnut table, sculptural seating, and linen pendant light, in dialogue with the handcrafted carpentry and furnishings by Olive Atelier. [Jonathon Hokklo](#)

The apartment is in constant dialogue with the outdoors: a large terrace with an outdoor kitchen and barbecue opens onto the living room, while the private rooftop features a heated plunge pool and dining area. "The goal was to conceive the outdoor spaces as a natural extension of the interior, establishing a direct dialogue between the two worlds to achieve a seamless fusion."

Common spaces and private intimacy



The master bedroom, illuminated by outside light, features travertine lamps and a camel velvet bench, creating a tranquil atmosphere. [Jonathon Hokklo](#)

The Bergen building is not just a residential building, but a true urban microcosm. Communal spaces dedicated to wellness, socializing, and culture intertwine with shared gardens and terraces, creating a continuum between interior and exterior. A cylindrical staircase bathed in natural light connects the different levels, becoming a sort of architectural totem that punctuates daily life. In this context, explains Ryan Mahoney, "the richness of the shared spaces made it necessary to think of the penthouse as a true sanctuary. We focused on intimacy and calm, with bespoke details and a balanced palette. The private spaces are designed to regenerate, balancing the vitality of the shared spaces."

A new paradigm of living



A living room that plays on shapes and textures: a Serge Mouille-style pendant lamp, a linen daybed by Sundays Furniture, a geometric oak console table, and a sand-colored velvet sofa create a harmonious ensemble that becomes the heart of a young family. [Jonathon Hokklo](#)

The Bergen penthouse reflects a new urban living style: Frida Escobedo's rhythmic and material architecture intertwines with Workstead's artisanal precision. The result is a home that transcends luxury to offer silence, light, and intimacy in constant dialogue with the city.