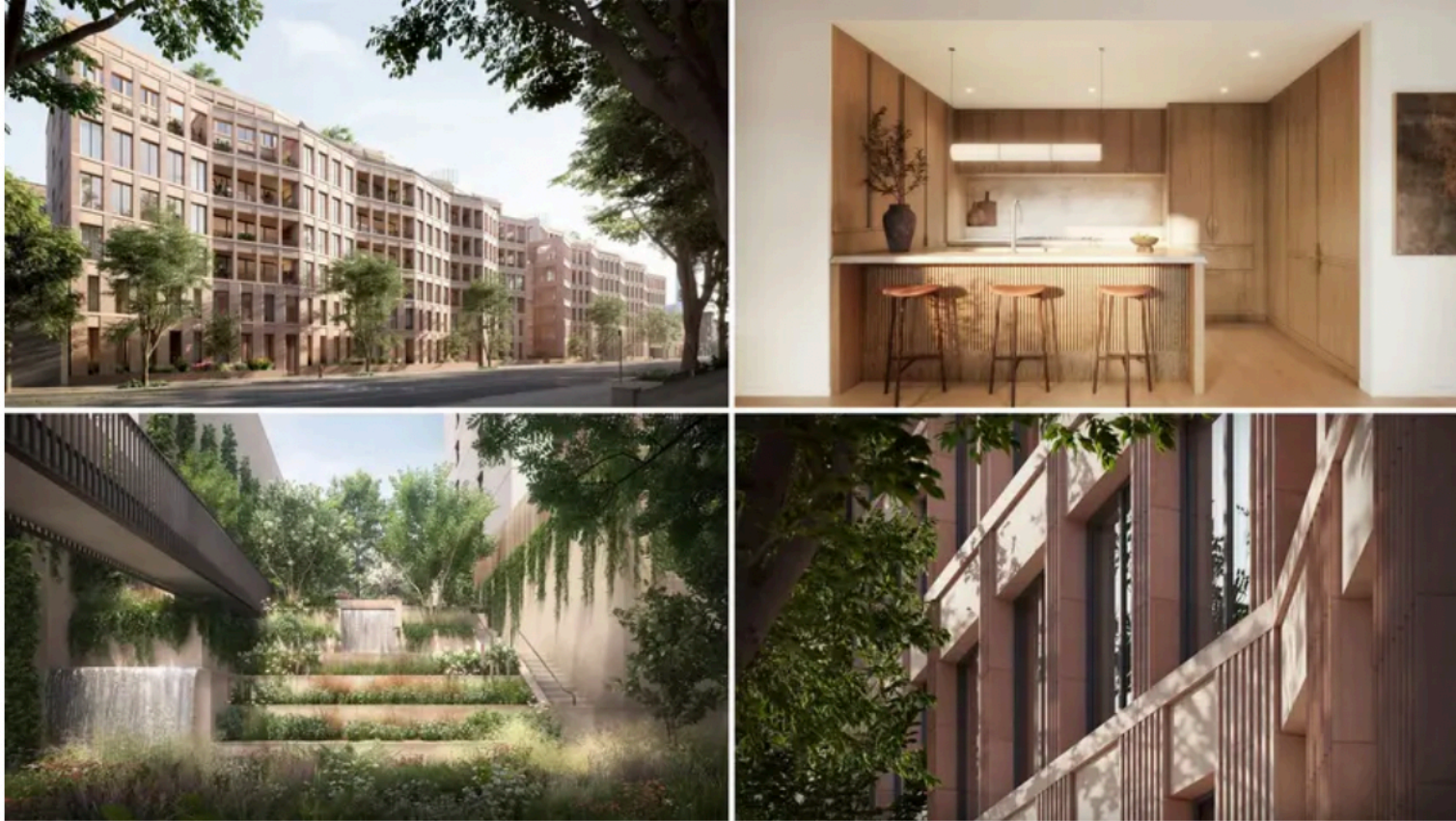


Four ways to prepare to buy a NYC apartment in 2024 + 10 new Brooklyn developments now selling

By [Cait Etherington](#) | From [Future New York](#)

Wednesday, May 15, 2024



Bergen Brooklyn, 323 Bergen Street (Renderings courtesy of Avdoo & Partners Development)

Bergen, Boerum Hill

323 Bergen Street

13 availabilities from \$775K



Bergen (Avdoo & Partners Development Marketing Inc.)

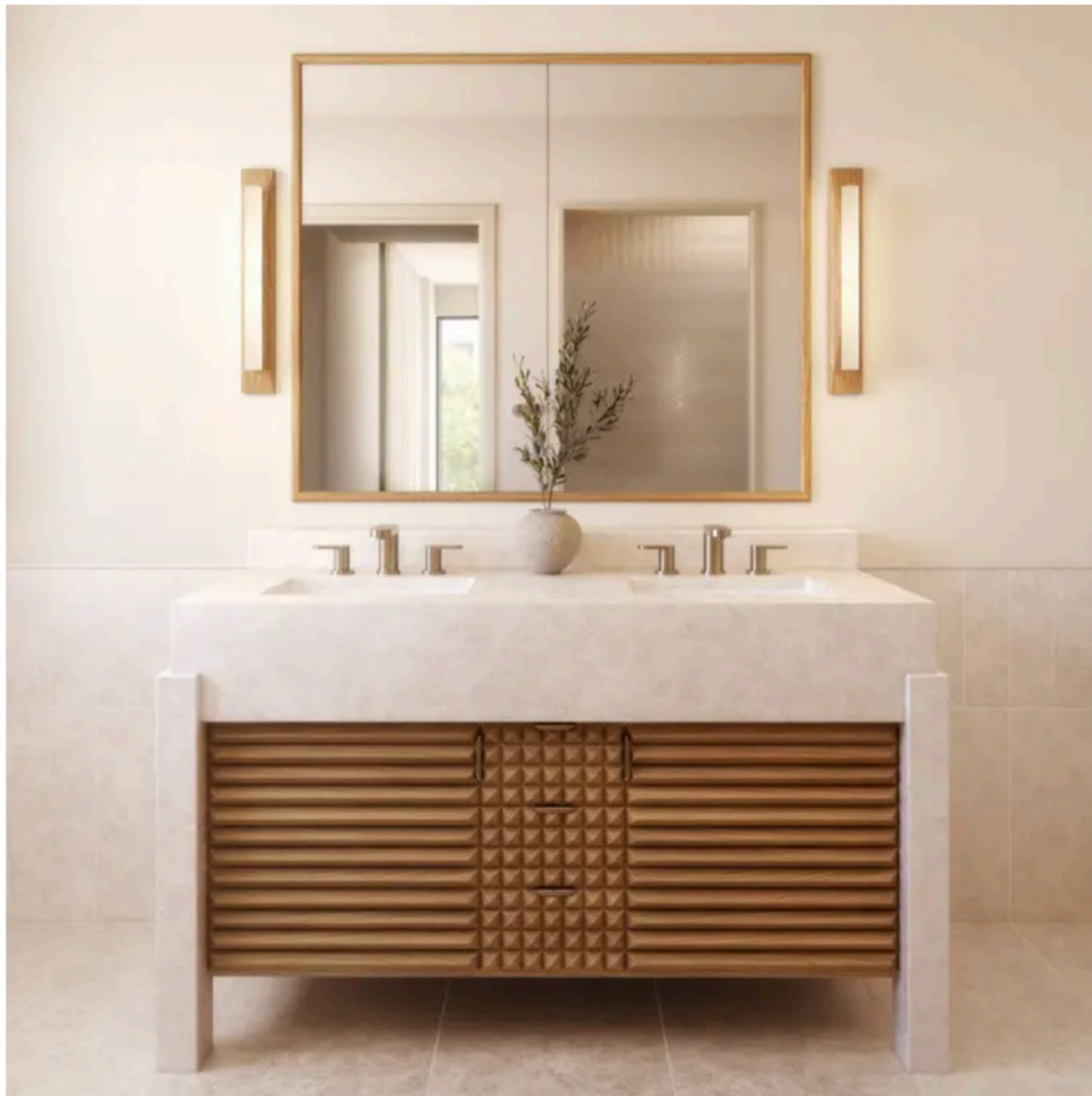
With 105 units and an address spanning a length stretch between 3rd and 4th Avenues, Bergen is one of the larger new development projects to take shape in Brooklyn in recent years. Designed by renowned architect Frida Escobedo, the building's East and West residential wings are connected by Glass House, a collection of amenities that includes an attended lobby, a ceramics studio, a fitness center, a private park, and two landscaped roof terraces. In both the East and West wings, interiors by Workstead feature earth tones, tall ceilings, floor-to-ceiling windows, oversized kitchens with state-of-the-art appliances, and spa-like primary baths.

Bergen, #PH707E
\$5,500,000

Boerum Hill | Condominium | 4 Bedrooms, 3 Baths | 2,872 ft²



Bergen, #PH707E (AVDOO & PARTNERS DEVELOPMENT MARKETING INC)





RESIDENCE PH707E

4 Bedroom
3.5 Bathroom

Roof Terrace
BBQ Station
Heated Plunge Pool
Wet Bar
Interior: 2,872 SF (266.8 SM)
Exterior: 1,130 SF (105 SM)
Ceiling Height: 10' - 3"
Exposure: North & South

Developer: Avdoo & Partners
Architectural Design: Taller Frida Escobedo
Interior Design: Workstead
Master Planning: DKA Studio
Landscape Design: DKA Studio & Patrick Cullina

@BergenBrooklyn BergenBrooklyn.com 718.814.8640 info@BergenBrooklyn.com



South Elevation



East Elevation



North Elevation

BergenBrooklyn.com • 718.814.8640 • info@BergenBrooklyn.com • 323 Bergen Street, Brooklyn, NY 11207



From the Listing: Introducing Penthouse 707E, a truly one-of-a-kind four bedroom, three and a half bathroom residence blending traditional elements with a stylish modern design. Upon entering this grand home through a custom designed foyer, you're greeted by 10'3" ceilings with south, east and northern exposures creating a warm, light filled ambiance. This impressive home offers a directly accessible 1,130-square-foot private roof terrace with a temperature controlled plunge pool, gas grilling station and open views, creating an unparalleled experience for entertaining guests or simply relaxing. [See floor plan and full details here.](#)