

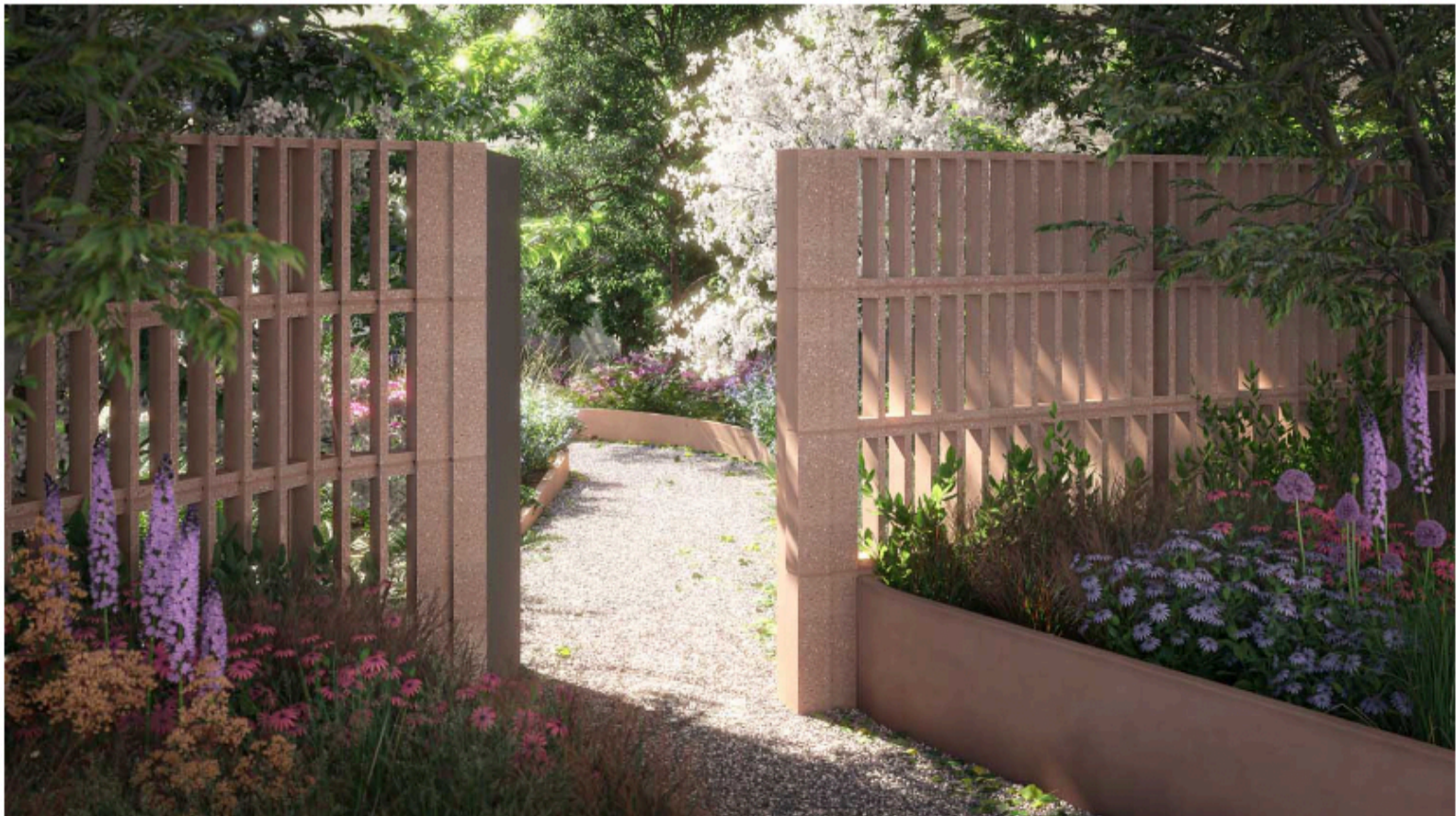
BERGEN RESIDENTIAL COMPLEX: A NEW BROOKLYN LANDMARK  
WITH OVER A HUNDRED APARTMENTS, THE PROJECT WILL COMPLEMENT THIS NEW YORK NEIGHBORHOOD, BRINGING  
ARCHITECTURE AND NATURE INTO DIALOGUE

FRIDA ESCOBEDO



Standing on a tree-lined avenue in Boerum Hill, Brooklyn, Bergen is a new residential project designed by Frida Escobedo's Mexican studio for Avdoo & Partners Development, a real estate investment company that has developed over 2 million m<sup>2</sup> of properties over the last two decades, and has a large portfolio of residential and non-residential assets.

Bergen has 19,400 m<sup>2</sup> of floorspace, 105 apartments, and 53 different unit types, ranging from studios to five-bedroom apartments. Set to become a new icon on the Brooklyn landscape, the building is expected to be completed in 2025.

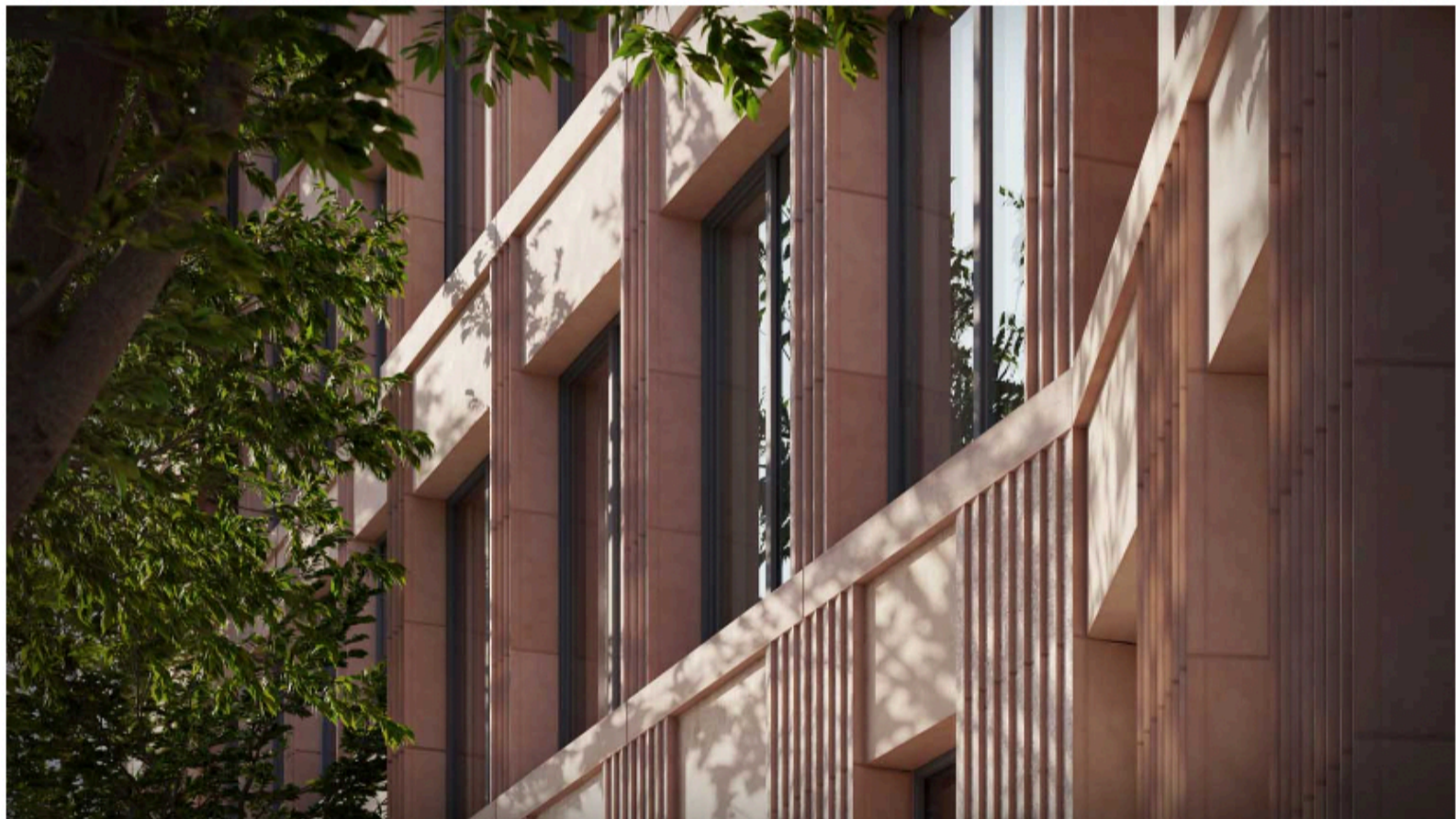


## Bergen: a strong and collaborative design vision

Coinciding with her work on the expansion of the Metropolitan Museum of Art, this is **Frida Escobedo's** first residential project, which her studio won, according to **Shlomi Avdoo**, principal and founder of Avdoo & Partners, for her "**strong design vision**". Bergen will complement this residential area and, as Avdoo explains, will be "an elegant addition to the neighborhood that is rooted in her keen sensibility of material and scale."

**AD100 Workstead** is providing the interior design. With the aim of creating an ongoing dialogue between inside and out, most of the apartments have **private outdoor spaces**, while the complex itself overlooks a **residents-only park**, designed by **DXA Studio** and **Patrick Cullina**. Taller Frida Escobedo worked closely with DXA Studio on this project in a collaborative exchange of ideas that shaped the design with its two residential wings connected by a central amenities space, distinctive undulating façade, and window openings. Finally, **GF55** was executive architect.

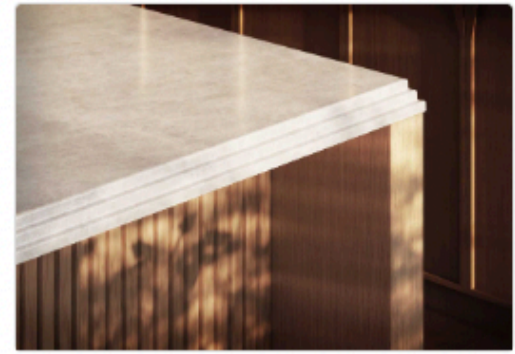
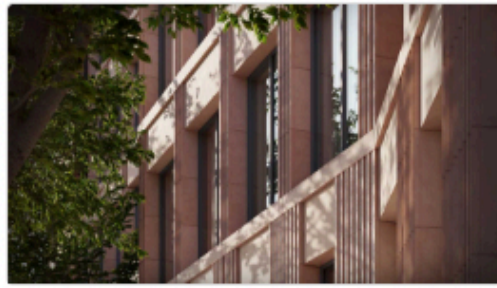
"It has been an incredibly collaborative process and sincere pleasure working with Avdoo, DXA, and Workstead on this project," says Frida Escobedo. "From conceptualizing the design to the last detail, we felt a responsibility to approach Bergen in a way that would be respectful of the character of the neighborhood and the surrounding environment, while creating something new that would stand the test of time".



## Urban nature

Designed to complement the neighborhood fabric, Bergen celebrates the natural elements of light and air through an **undulating facade** composed of **custom blocks** with different sizes and degrees of opacity. Escobedo leveraged the complex's orientation to **maximize natural light** from the east and west, creating a cohesive rhythm of scale, materiality, and color. **Porosity and transparency** characterize the design of the building, which is accessed via the **Glass House**, a **curtained-walled rectangular volume** that serves as an entrance off both Dean and Bergen Streets.

The project includes **1350 m<sup>2</sup> of interior amenities** on four levels. They are accessed via a cylindrical staircase, designed to bring abundant natural light inside the building. As well as ample indoor amenities, ranging from health to wellness, entertainment, and the arts, residents will have access to **1110 m<sup>2</sup> of outdoor amenities**, including Dean Park and two common rooftop gardens designed by DXA and Patrick Cullina. Parking, storage, and bicycle storage facilities will also be available.



**Location:** New York, USA

**Status:** Ongoing

**Real Estate Operator:** Avdoo & Partners Development

**Architect:** Taller Frida Escobedo

**Interior Design:** AD100 Workstead

**Landscape:** DXA Studio and Patrick Cullina

**Supervision on Worksite:** GF55

**Rendering by** DARCSTUDIO, **couretsy of** Taller Frida Escobedo